



CARNAHAN · PROCTOR · CROSS, INC.

CONSULTING ENGINEERS · SURVEYORS · PLANNERS

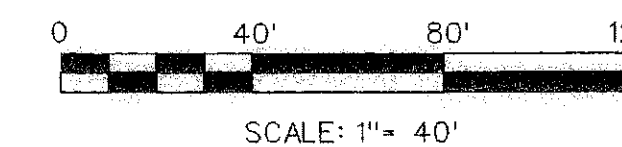
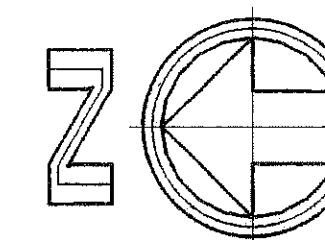
6101 W. ATLANTIC BLVD., SUITE 201, MARGATE, FL 33063
PHONE: 954-972-3959 FAX: 954-972-4178

051112

DCW

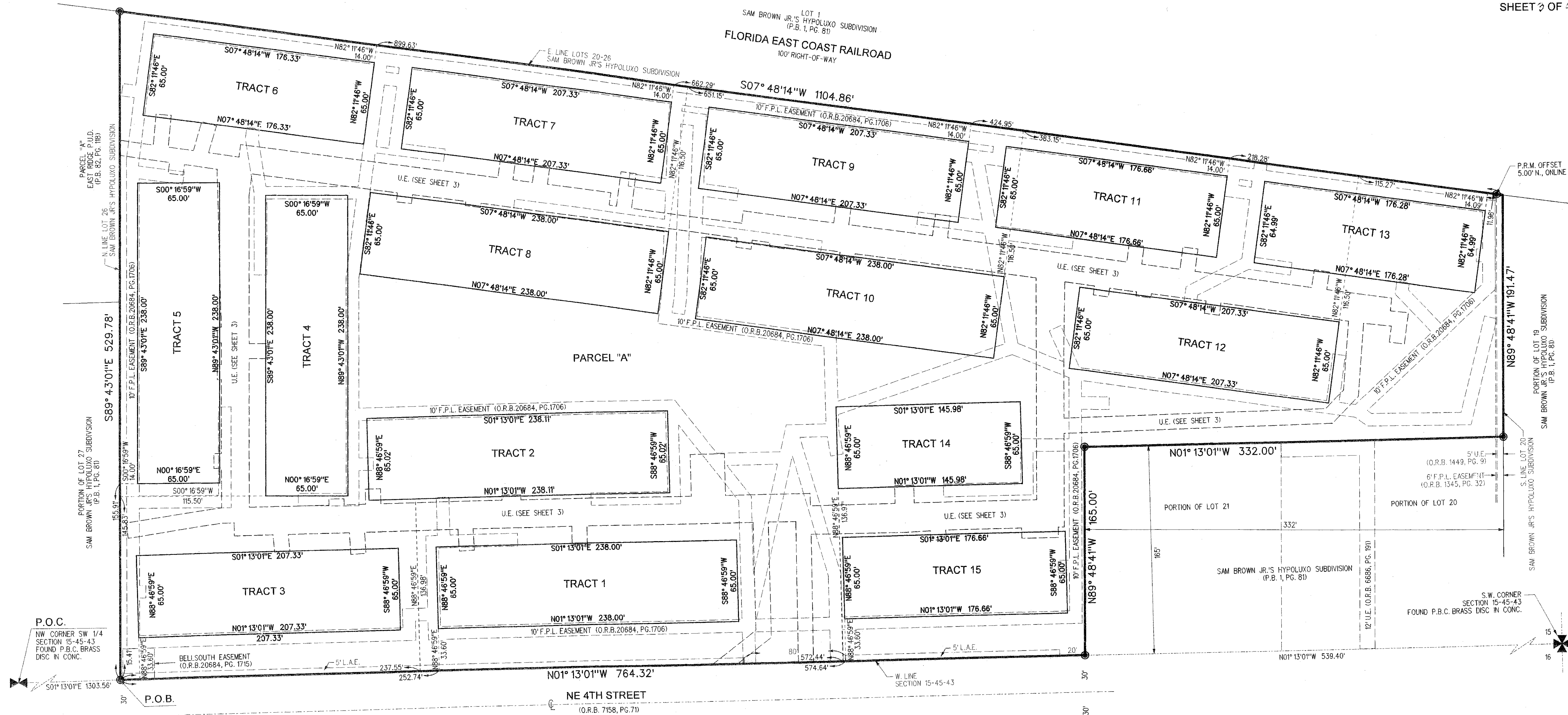
PRESERVE AT BOYNTON BEACH

A REPLAT OF A PORTION OF LOTS 20-26,
SAM BROWN JR.'S HYPOLUXO SUBDIVISION (P.B. 1, PG. 81, P.B.C.R.)
IN SECTION 15, TOWNSHIP 45 SOUTH, RANGE 43 EAST
CITY OF BOYNTON BEACH, PALM BEACH COUNTY, FLORIDA
JULY 2007



93

SHEET 3 OF 4



LEGEND:

- CENTERLINE
- PERMANENT REFERENCE MONUMENT: SET 4" DIAMETER CONCRETE MONUMENT W/ DISC STAMPED P.R.M. LB2936 (UNLESS OTHERWISE NOTED)

ABBREVIATIONS

- CONC. = CONCRETE
- F.P.L. = FLORIDA POWER & LIGHT COMPANY
- L.A.E. = LIMITED ACCESS EASEMENT
- O.R.B. = OFFICIAL RECORD BOOK
- P.B. = PLAT BOOK
- P.B.C. = PALM BEACH COUNTY
- P.B.C.R. = PALM BEACH COUNTY RECORDS
- P.O.B. = POINT OF BEGINNING
- P.R.M. = PERMANENT REFERENCE MONUMENT
- P.U.D. = PLANNED UNIT DEVELOPMENT
- PG. = PAGE(S)
- U.E. = UTILITY EASEMENT